

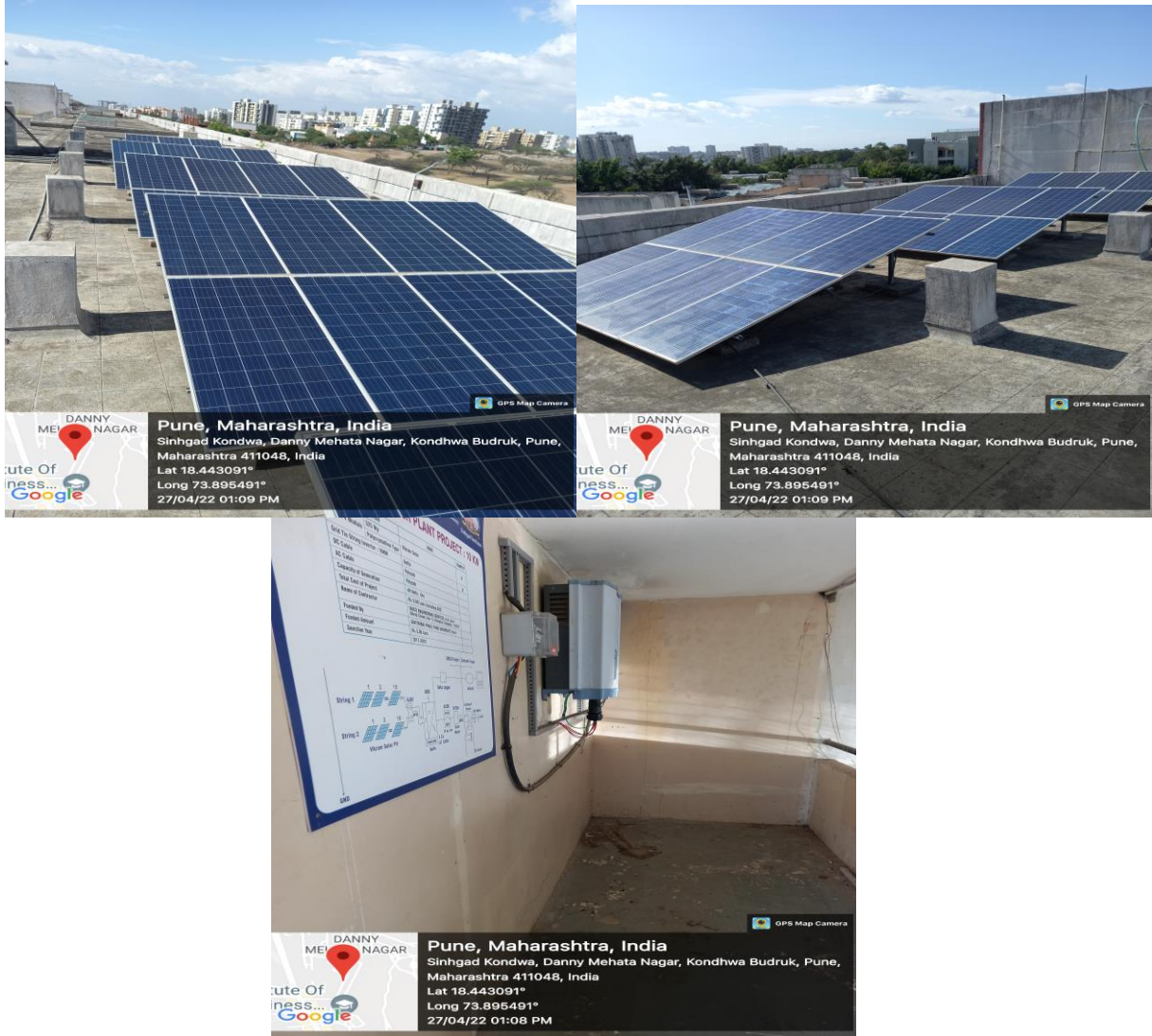
7.1.2 The Institution has facilities for alternate sources of energy and energy conservation measures



Solar Panels

The institute is adopting sustainable source of energy in the form of solar energy. At the roof top of the hostel building Solar Water heater Panels are installed which serve the requirement of hot water in the hostel building for bathing, cleaning purpose. This reduces electricity consumption on the large scale which leads to environmental betterment by curtailing depletion of natural resources of fuel and also reduces pollution load on the environment.

2. Wheeling to Grid



Solar Panels for Generating Electricity

Solar Photo Voltaic Cell panels are mounted on the terrace of main building of Institute for electricity generation is provided with 10kWatt Grid Tie String Inverter. It generates 40 Units of electricity per day in normal sunshine. The electricity generated is utilized for day to day power need of the Institute.

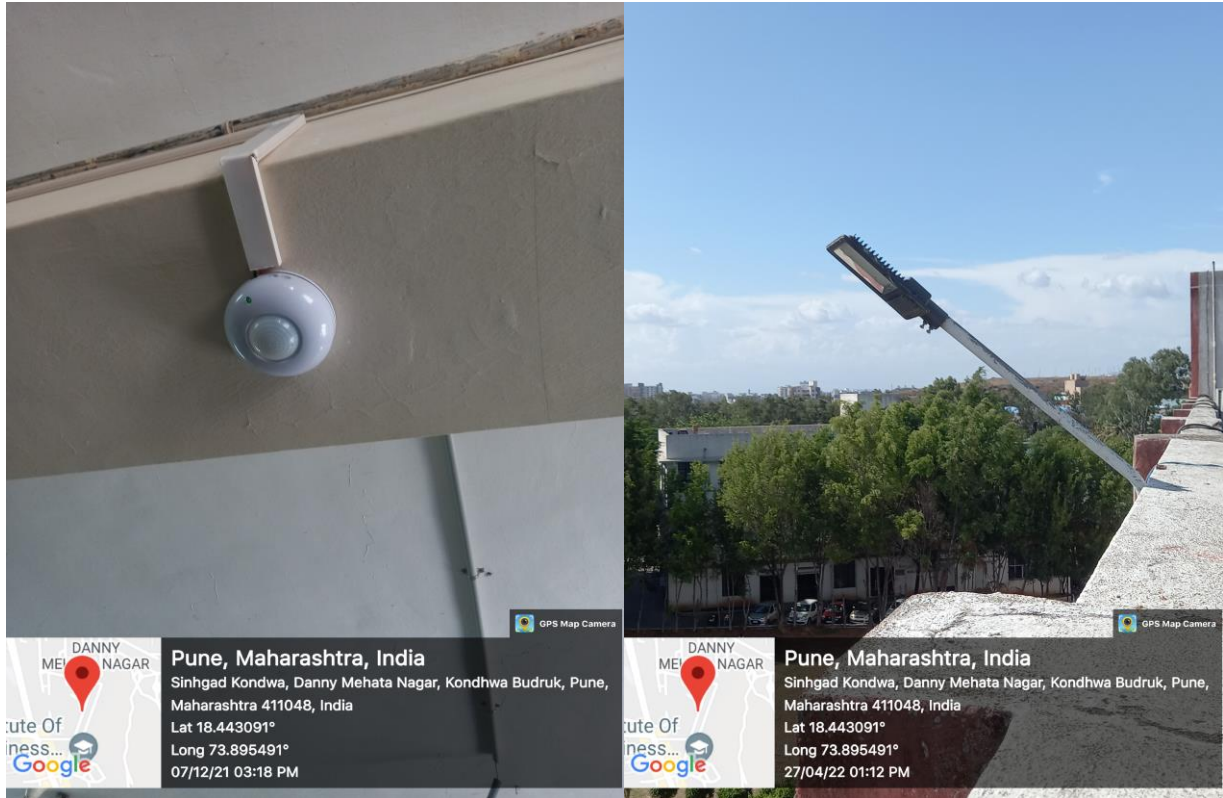
3. Sensor Based Energy Conservation



Sensor Based Energy Conservation

Sensor based photosensitive PIR Device Ceiling type: (BT31C) cells are used for the reduction in the consumption of electricity at the central reading hall of the Institute library. This system works on the principal of sensing the presence of movable thing and if anyone is there in the vicinity of the device the lights turned on.

4. Use of LED bulbs/ power efficient equipment



LED bulbs/ power efficient equipment

LED bulbs and tubes are used at various locations in the Institute in the building as well as in the Institute premises. It's usage will reduce the load on the consumption of electricity.